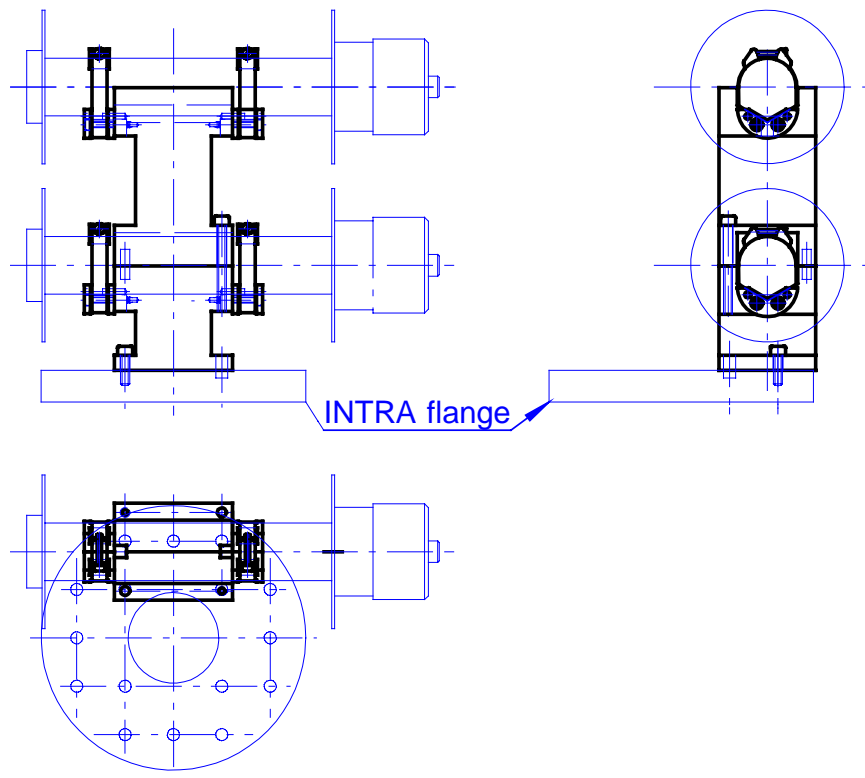


Interface for Pyrheliometer

Datasheet

This interface allows to install one or more pyrheliometers on the east- or west-flange of INTRA. It consists of a base clamp and additional secondary clamps to accept additional pyrheliometers. The sketch below illustrates this for two NIPs – stacked one on top of the other.



The dimensions of the clamps are such to allow operation of one or more NIPs equipped with filter wheel.

The interface is designed to accept other instruments as well. The tube of the instrument goes into a V-shaped groove and is hold in place by straps. The V-shaped groove is detailed in the sketch below (base clamp).

